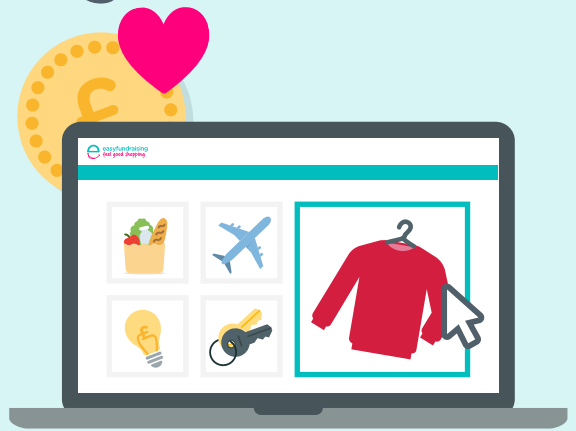


# Raise over £200 a year for

## by shopping online through easyfundraising

We're fundraising this year for:



### Shopping list

	COST	RETAILER	ANNUAL DONATION
Weekly groceries	£53.20 per week	Sainsbury's	50p x 52 = <b>£26</b>
Family summer holiday	£1,310	Expedia.co.uk	7% = <b>£91.70</b>
Fashion	£101.80 per month	Boden	3% x 12 = <b>£36.65</b>
Takeaways	£21.14 per month	hungryhouse	2% x 12 = <b>£5.07</b>
Car insurance	£462	AVIVA	£30 x 1 = <b>£30</b>
Home insurance	£230	AA	£30 x 1 = <b>£30</b>
Switching Energy Supplier	Free	Switch uSwitch.com	£12 x 1 = <b>£12</b>

**TOTAL PER FAMILY = £231.42**

**20 FAMILIES = £4,628**

**100 FAMILIES = £23,142**

Join today and help us make a difference through your every day shopping  
[www.easyfundraising.org.uk](http://www.easyfundraising.org.uk)